



EUROPE - EN - 2024



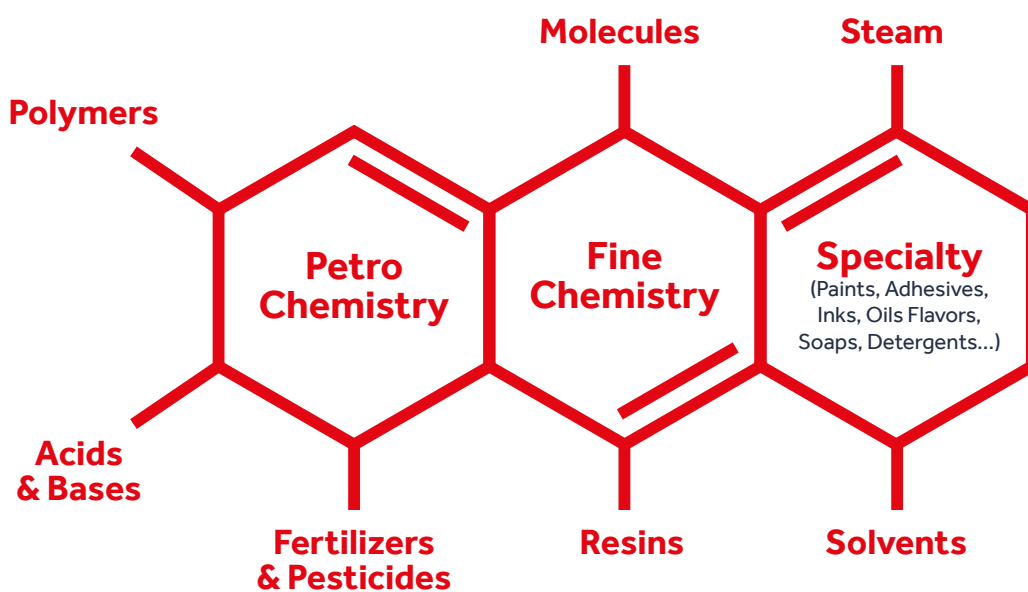
**Solutions
Chemistry
& Process**

meca-inox.com

Chemistry & Process **Solutions**

Discover our range of more than **10 000** different manual and actuated ball valve configurations, with standard and special designs and material to find your specific solution.

Since more than **60 years**, MECA-INOX is a ball valve strategic partner of major chemistry and process industries. For Petro Chemistry, Fine Chemistry and many Specialties, our valves are qualified and used for their **performance, durability and quality**. Designed, produced and tested in our facilities in France, all our ball valves are complying with European and International strictest standards.



EN12266-1
"A class" Tightness

Helium & Gases Tightness

ISO15848-1 (2006)
« Class B Helium fugitive emission »



Applications

Acids, Bases, Solvents, Alcohol, Gases, Steam, Reactants, Utilities ...



Production & Storage



**Olefins
& Aromatics**



**Polymers
& Elastomers**



**Fertilizers NPK
& Pesticides**



**Paints, Resins
& Coatings**



**Adhesives
& Inks**



**Powders
& Explosives**



**Soaps, Shampoos
& Detergents**



**Flavors
& Fragrances**



**Oil, Ethanol
& Bio Diesel**



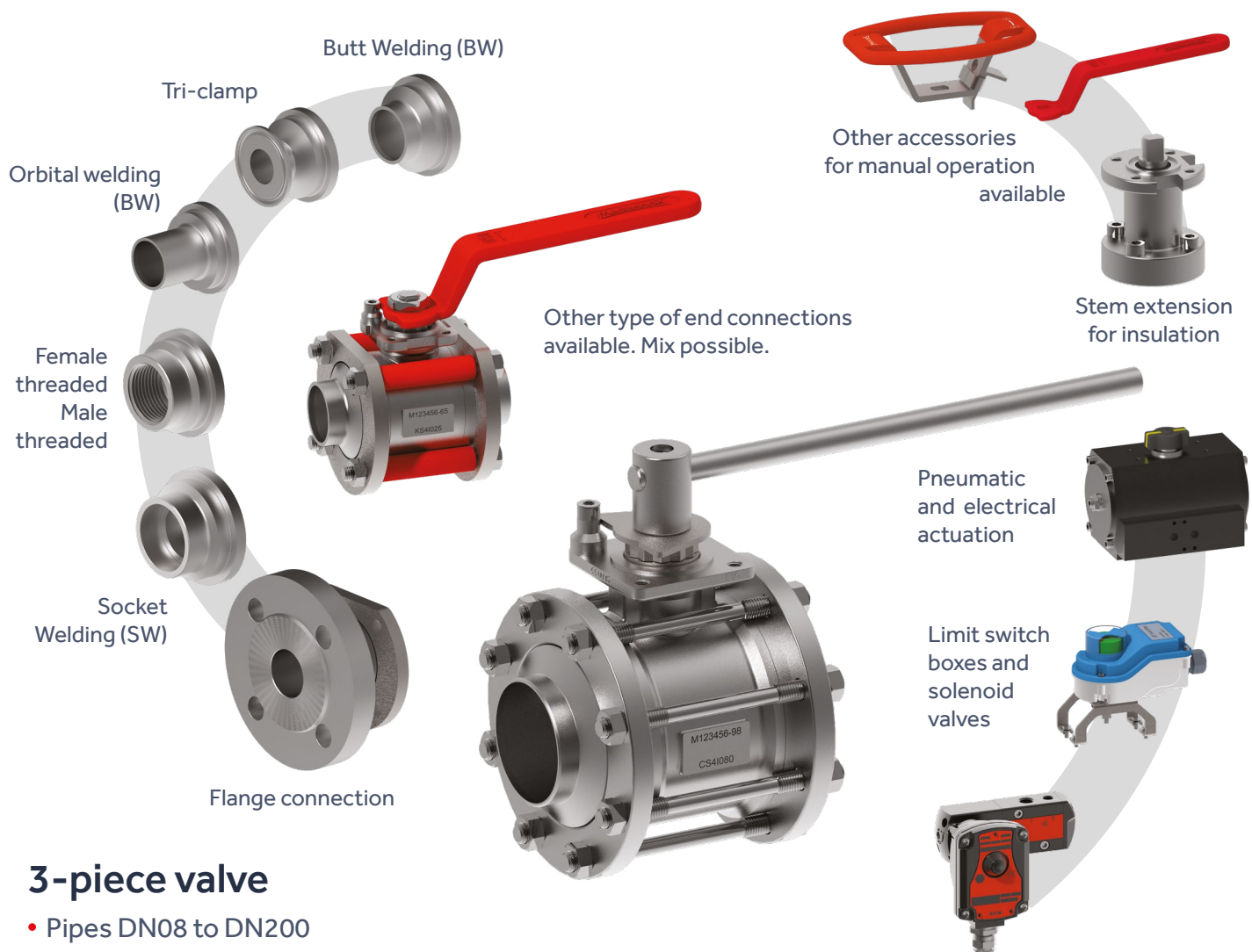
ADR/RID 2023 transport

✓ EN14432 Certified Valves

They **trust** us

Arkema | BASF | Bayer | Clariant | Colgate | Dior | DRT | DSM | Givaudan
Henkel | L'Oréal | Oril | PPG Coatings | Roquette | Sanofi | Solvay | Tate & Lyle
Toray | Yara

3-piece valves **modularity**



3-piece valve

- Pipes DN08 to DN200
- Full bore / reduced bore
- Pressure class PN16 to PN100
- Option: cavity fillers, degreased for O₂ application acc. to EN12300

Special Designs

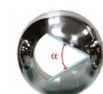
Regulation for steam and thermal fluids



- $\pm 10\%$ Accuracy
- Tight in closed position, do not require an additional on/off valve
- Suitable for level regulation, temperature management, ...
- Wide range of flow rates available



Standard ball



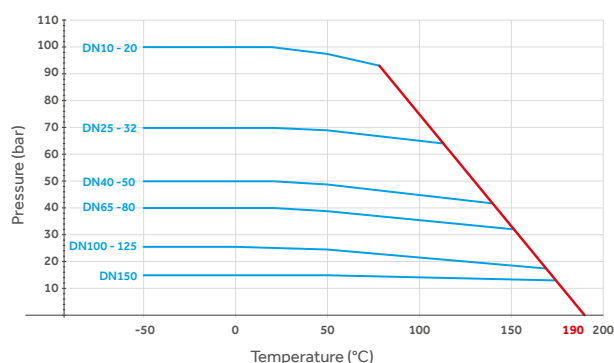
V60 ball



V30 ball

Line PS4 I

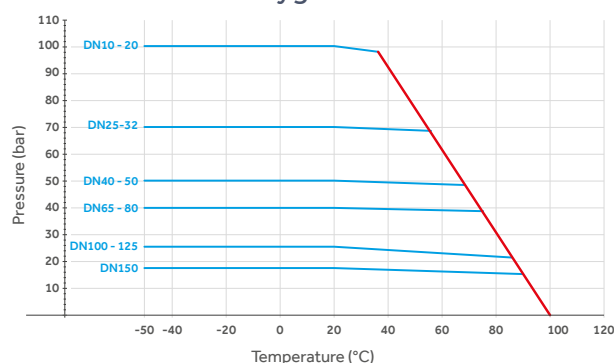
- PTFE 2nd Generation seats
- Acids, Base, Solvents, Alcohols, Gases



 Service temperature @ ΔP 1 bar
-50°C to 190°C

Line PH4 I

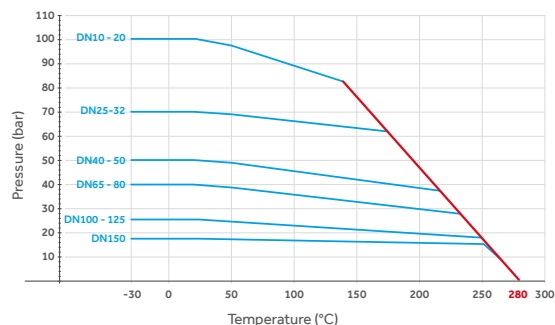
- TIVAR 1000® HDPE seats
- Water & Gaz in Radiation Environment, Medical Oxygen...



 Service temperature @ ΔP 1 bar
-50°C to 100°C

Line PZ4 I

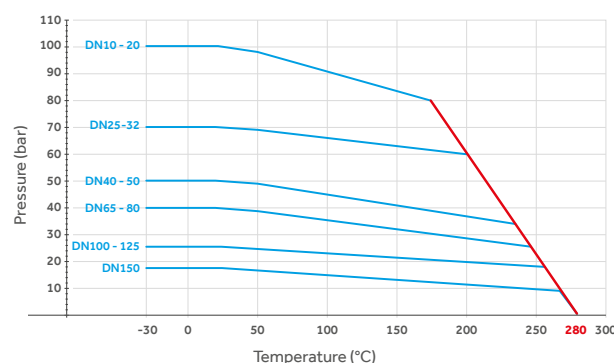
- PTFE 20% PEEK seats
- EN14432 certified
- Steam, Hot Oils, Hot Chemicals, Bitumen...



 Service temperature @ ΔP 1 bar
-30°C to 280°C

Line PP4 I

- PEEK seats
- Hot Concentrated Acids, Oil Cracking...



 Service temperature @ ΔP 1 bar
-30°C to 280°C

Corrosion



- Wetted parts in contact with the fluid in specific corrosion resistant materials:
 - ➔ 304L
 - ➔ 904L
 - ➔ Alloy C22
- Pipes DN08 to DN200
- Full bore and reduced bore
- Pressure class PN16 to PN100
- Option: cavity fillers

Other lines



- True bore version
- 3-way versions, L or T bore

Line R2H I



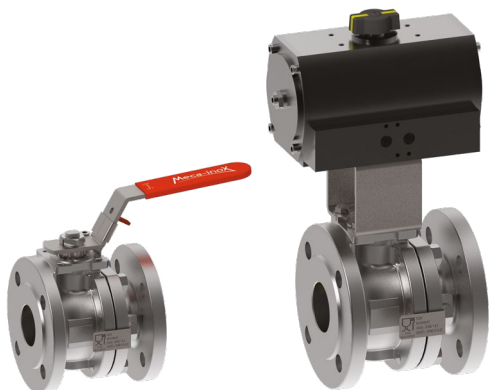
2-piece valve R2H I

- Fire safe acc. to ISO 10497
- Flange connection acc. to EN1092-1
- Face-to-face EN558 Series 4 short pattern and Series 1 long pattern
- Pipes DN15 to DN200
- Pressure rating;
 - ➔ PN40 (DN15 to DN80)
 - ➔ PN16 (DN100 to DN200)
- Pneumatic and electrical actuation
- Option: extended stem for insulation



Service temperature @ ΔP 1 bar **-50°C to 210°C**

Line R2Z I



2-piece valve R2Z I

- Flange connection acc. to EN1092-1
- Face-to-face EN558 Series 4 short pattern
- Pipes DN15 to DN200
- Pressure rating:
 - ➔ PN40 (DN15 to DN80)
 - ➔ PN16 (DN100 to DN200)
- Pneumatic and electrical actuation
- Option: extended stem for insulation



Service temperature @ ΔP 1 bar **0°C to 280°C**

Line CL4 I



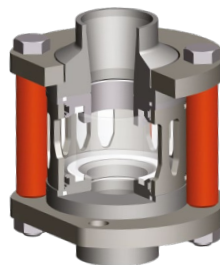
3-piece check valve CL4 I

- Pipes DN08 to DN65
- Pressure class PN80
- Any stainless steel end connection available (BW, SW, threaded, flanged, ...)
- Option: degreased for O₂ application acc. to EN1230



Service temperature @ ΔP 1 bar **-196°C to 190°C**

Line VC4 I



3-piece sight glass VC4 I

- Pipes DN08 to DN65
- Pressure class PN6, PN10 & PN16
- Any stainless steel end connection available (BW, SW, threaded, flanged, ...)



Service temperature @ ΔP 1 bar **-50°C to 200°C**

Design DBB



Double Block & Bleed Design

- Pipes DN08 to DN150
- Double block for isolation and bleed for drain
- Ensure the safety of your operators and installations
- Corrosive and dangerous fluids (PS4 version) & steam and high temperature fluids (PZ4 version)
- BW ends or flanged ends
- Available with lockable lever and/or actuation. Mix possible.

For further information, see the DBB brochure

Design AFL / FC



Flush design / Tank Bottom

- Reduced retention zone
- For tank bottom installation and flushing lines (collection and injection)
- Any stainless steel end connection available (BW, orbital, clamp, ...)

Design ET



Jacketed Valve Design

- Jacket suitable for steam, water or thermal oils up to 25 bar
- Maintain the temperature of circulating products
- Any stainless steel end connection available (BW, orbital, clamp, ...)
- Pneumatic and electrical actuation

Line RBSTNI



1-piece ball valve RBSTNI

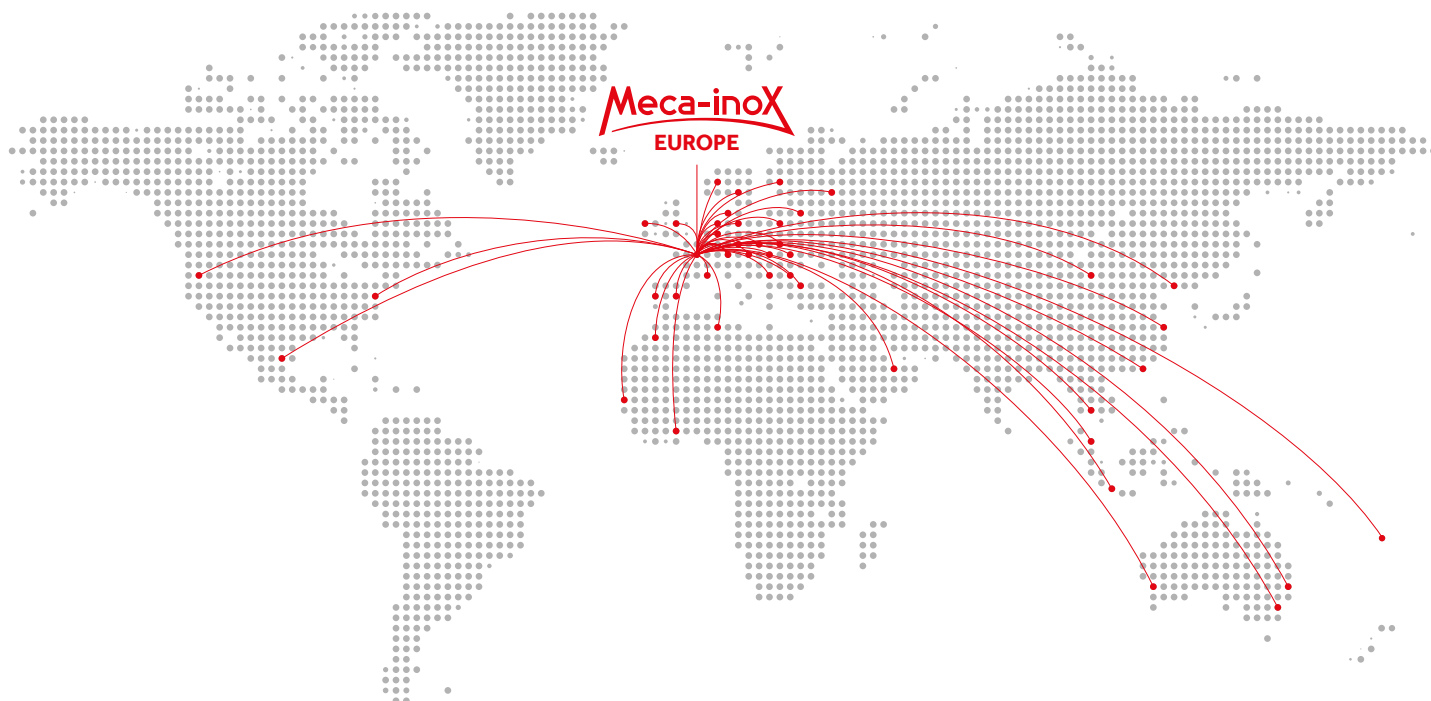
- Pipes from DN08 to DN80
- Pressure class PN63
- Threaded connection
- Qualified by Meca-Inox for low pressure utilities



Service temperature @ ΔP 1 bar **-25°C to 175°C**



TÜVRheinland®
CERT
ISO 9001



Your reference for large-scale international projects

As a leader in France and a key player in Europe in its markets, the company **operates in over 35 countries** through a network of around a hundred distributors.

Thanks to the capacity and flexibility of its industrial site in Gisors (Normandy), capable of producing up to 20,000 valves per month, Meca-Inox adapts to all its customers' demands: from a few valves for industrial equipment to over 10,000 valves for building a new mega-factory, as well as maintenance parts for installed valves.

3 000 000 valves installed
in 150 countries

150 000 valves produced
per year

100 official stocking
distributors

MECA-INOX EUROPE

1, rue de la Croix des Maheux
F-95031 CERGY-PONTOISE CEDEX
T. + 33 (0)1 78 47 80 00
infos@meca-inox.com

meca-inox.com

INDUSTRIAL PLANT

12, rue de la Haute Borne
ZAC Le Mont de Magny
27140 GISORS – France

BALL VALVES MADE IN FRANCE

WORLDWIDE AVAILABLE