



EUROPE - EN - 2024



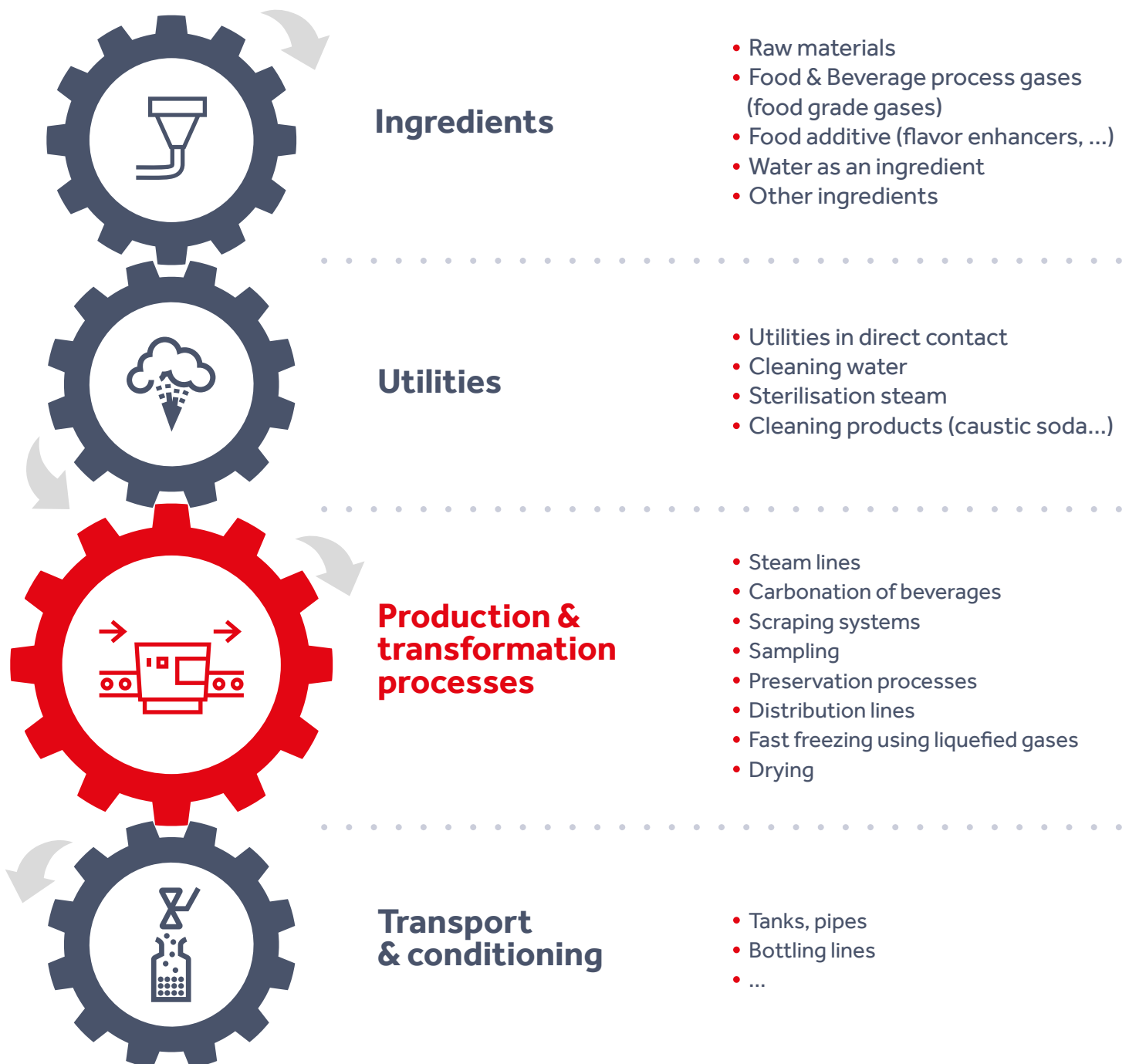
**Solutions CE1935  
Food  
Processing  
Industry**

**[meca-inox.com](http://meca-inox.com)**

# Valves 100% adapted and integrated into food processes

Regulation **(EC) 1935/2004** governs the agri-food market and defines the requirements that apply to materials and objects intended to come into **direct or indirect contact** with foodstuffs.

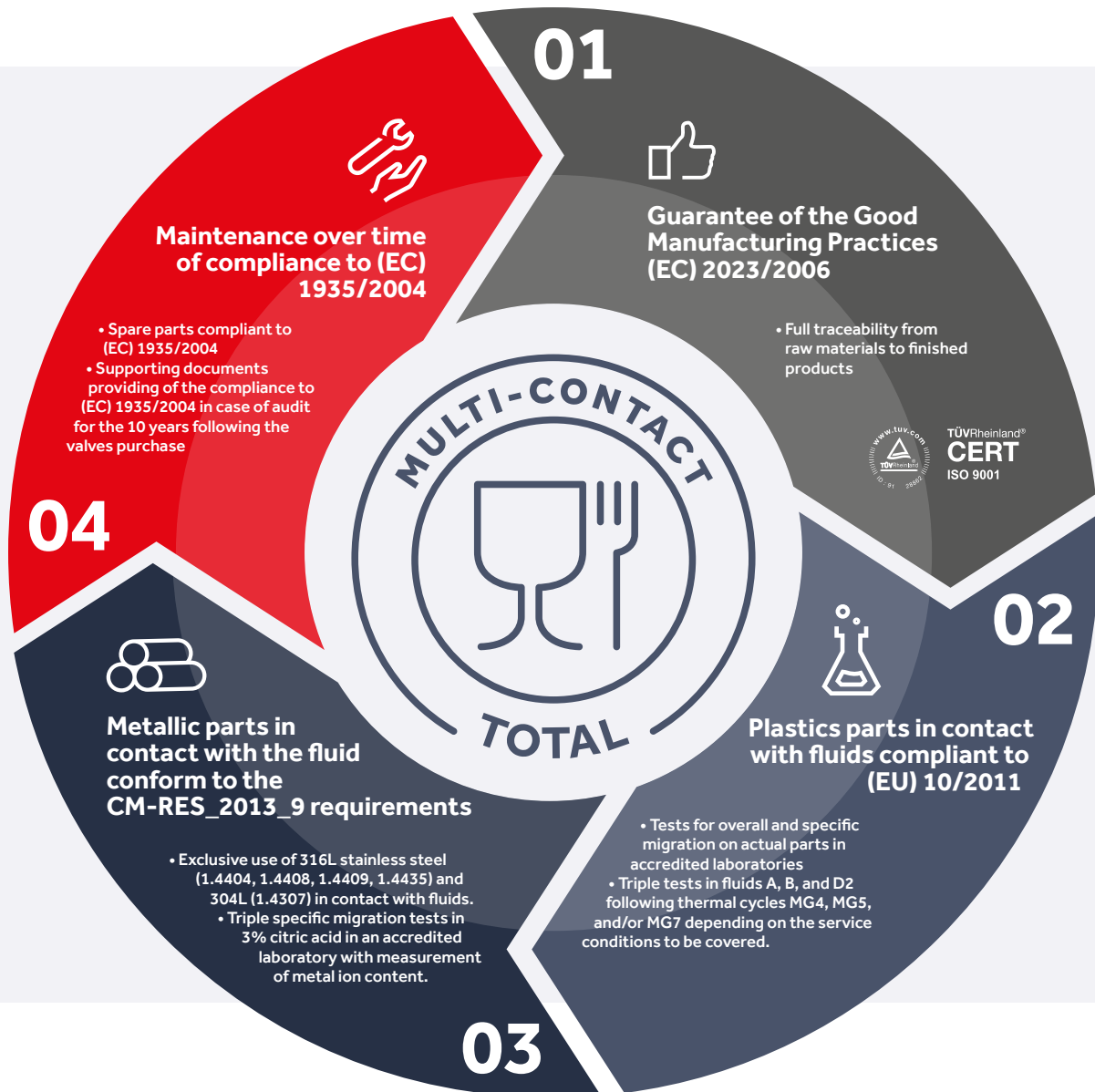
These foodstuffs are described in Article 2 of Regulation **(EC) n° 178/2002**: beverages, chewing gums, and all substances, including water, intentionally incorporated into foodstuffs during their manufacture, preparation, or treatment.



All **equipments** including valves **are used during processes** such as food fast freezing with liquefied gases, steam cooking, or food sampling. Being in contact whether direct or indirect with foodstuffs, these equipments are submitted to the **(EC) n°1935/2004**.

Unlike food packaging, **these processes lines** equipments must meet **multi-contact requirements**.

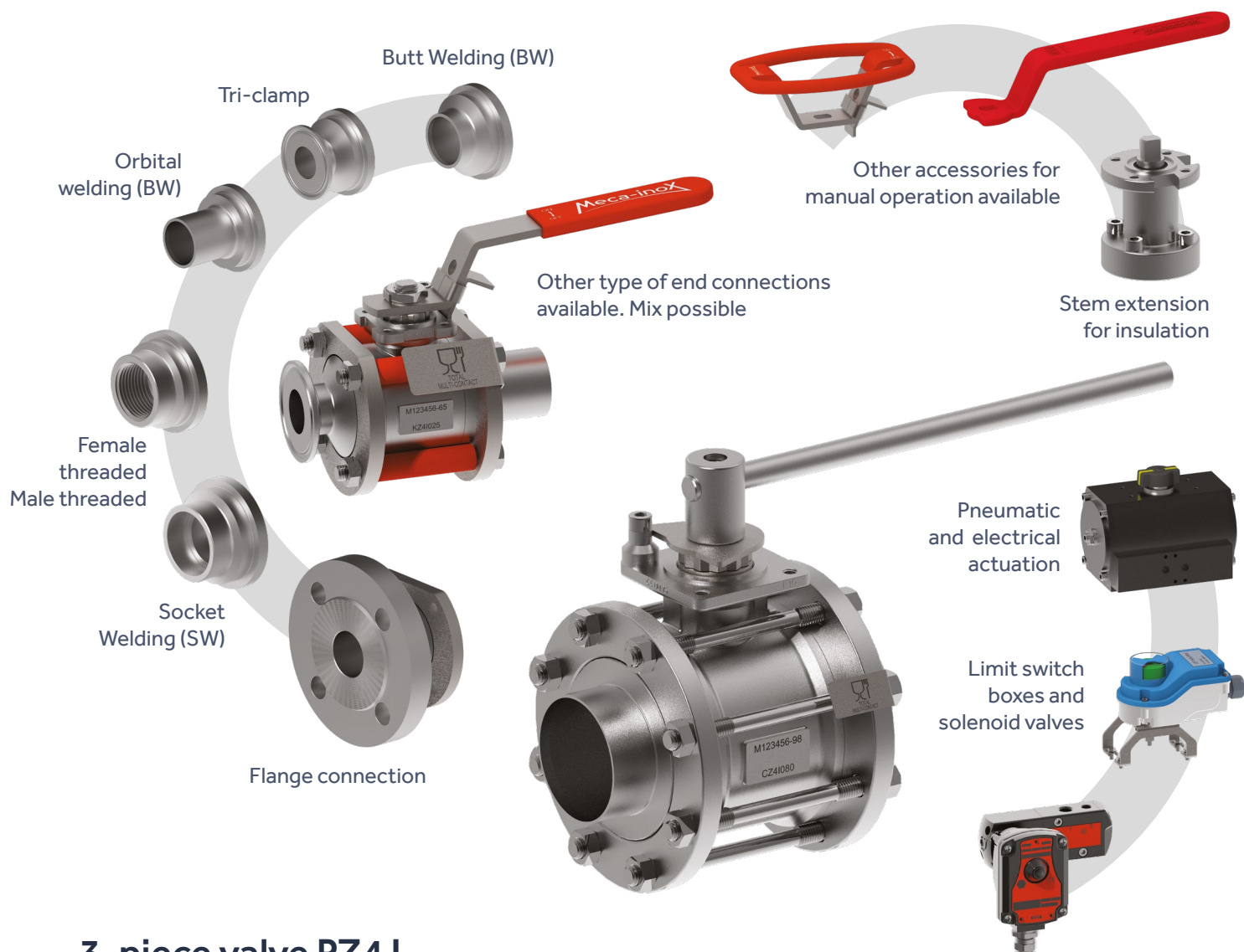
To meet the requirements of our clients, we offer **a complete range** of ball valves in compliance with the **(EC) n°1935/2004 regulation**. We also propose solutions for upgrade to compliance and maintenance of existing plants.



## They trust us

Air liquide | GEA Process Engineering | Linde | Mars | Messer | Nestlé |  
 Pierre Guérin | Roquette | Sanofi | Saint-Louis Sucre | Saipol | SPX Flow |  
 Tetra Pak | Wrigley

# Line PZ4 I



## 3-piece valve PZ4 I

- Pipes DN08 to DN200
- Pressure class PN16 to PN100
- EN 14432 certified
- Option: CE1935 cavity fillers
- CE1935 spare parts

## Special lines

- V-ball 30° or 60°
- True bore version
- 3 ways version, L bore or T bore



All food & ingredients  
Liquids, gas, powders



[-30°C to 121°C]



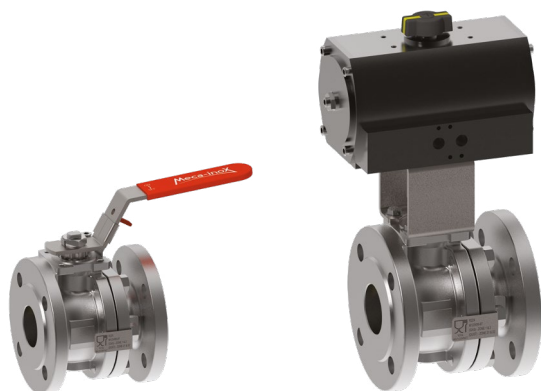
Steam, Overheated  
water, Oils



[up to 250°C]



# Line R2Z | Short pattern



## 2-piece valve R2Z I

- Flange connection acc. to EN1092-1
- Face-to-face EN558 Series 14 short pattern
- Pipes DN15 to DN200
- Pressure rating:
  - \* PN40 (DN15 to DN80)
  - \* PN16 (DN100 to DN200)
- Pneumatic and electrical actuation
- Option: extended stem for insulation
- CE1935 spare parts

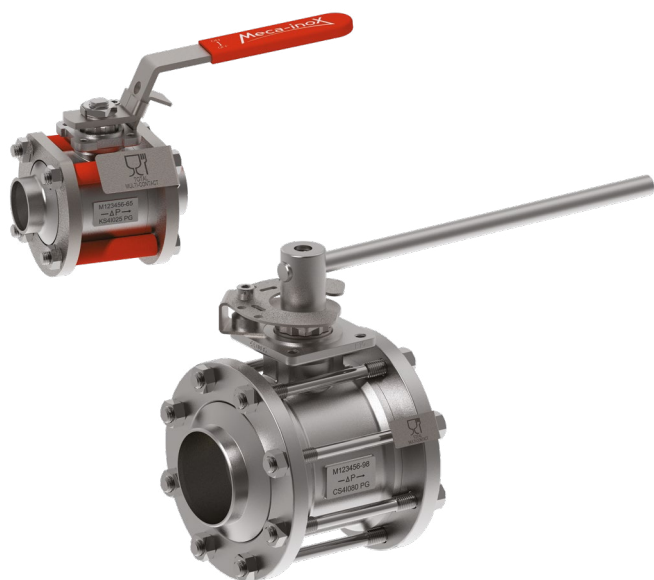


Liquid utilities, Steam, Overheated water, Oils



[0°C to 250°C]

# Line PS4 | PG



## 3-piece valve PS4 | PG

- Pipes DN08 to DN200
- Pressure class PN16 to PN100
- Degreased for O<sub>2</sub> application acc. to EN12300
- Functional EN1626 @ -50°C
- Pneumatic and electrical actuation
- Option: extended stem for insulation
- Any stainless steel end connection available (BW, orbital welding, clamp, ...)
- CE1935 spare parts

## Special lines

- ADR/TPED versions with  $\pi$  marking for liquid CO<sub>2</sub> transportation (EN1626 certified)
- 3 ways version, L bore or T bore

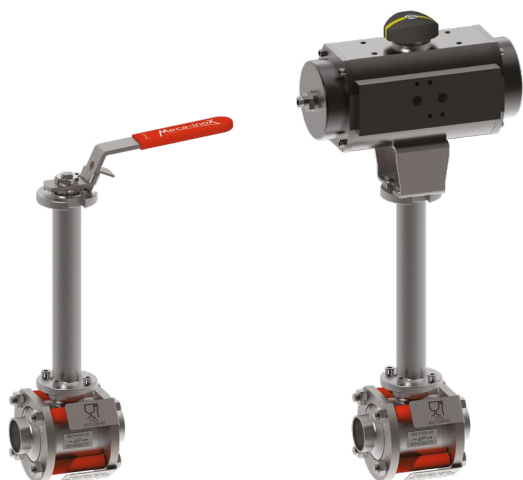


Liquid CO<sub>2</sub> and other gases



[-50°C to 121°C]

## Line PY4 | CY



### 3-piece valve PY4 | CY

- Pipes DN08 to DN200
- Pressure class PN16 to PN100
- Degreased for O<sub>2</sub> application acc. to EN12300
- Functionnal EN1626 @ -196°C
- Pneumatic and electrical actuation
- Any stainless steel end connection available (BW, orbital welding, clamp, ...)
- CE1935 spare parts

### Special lines

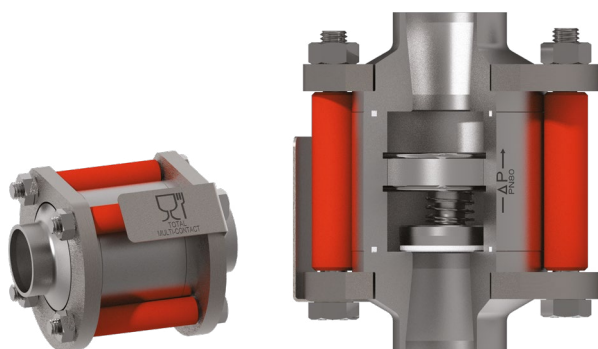
- V-ball 30° or 60°
- 3 ways version, L bore or T bore



Liquid nitrogen and other cryogenic gas and liquid

[-196°C to 121°C]

## Line CL4 |



### 3-piece check valve CL4 |

- Pipes DN08 to DN65
- Pressure class PN80
- Any stainless steel end connection available (BW, SW, threaded, flanged, ...)
- CE1935 spare parts

### Option

- Degreased for O<sub>2</sub> application acc. to EN12300 for cryogenic applications



All food & ingredients  
Liquids and gas



[-50°C to 121°C]



Liquefied gas & cold gas  
(LCO<sub>2</sub>, LN<sub>2</sub>, ....)



[-196°C to 121°C]

## Design PZ4 | DBB



### Double Block & Bleed Design

- Pipes DN08 to DN150
- Double block for isolation and bleed for drain
- Ensure the safety of your operators and installations
- Dangerous fluids (steam lines, edible oil cracking, alcohols ...)
- Orbital welding ends (BW) or flanged ends
- Available with lockable lever and/or actuation. Mix possible.
- CE1935 spare parts

For further information,  
see the DBB brochure

## Design PZ4 | ET



### Jacketed Valve Design

- Jacket suitable for steam, water or thermal oils up to 25 bar
- Maintain the temperature of circulating food and ingredients
- Any stainless steel end connection available (BW, orbital, clamp, ...)
- CE1935 spare parts
- Pneumatic and electrical actuation

## Design PZ4 | AFL / PZ4 | FC

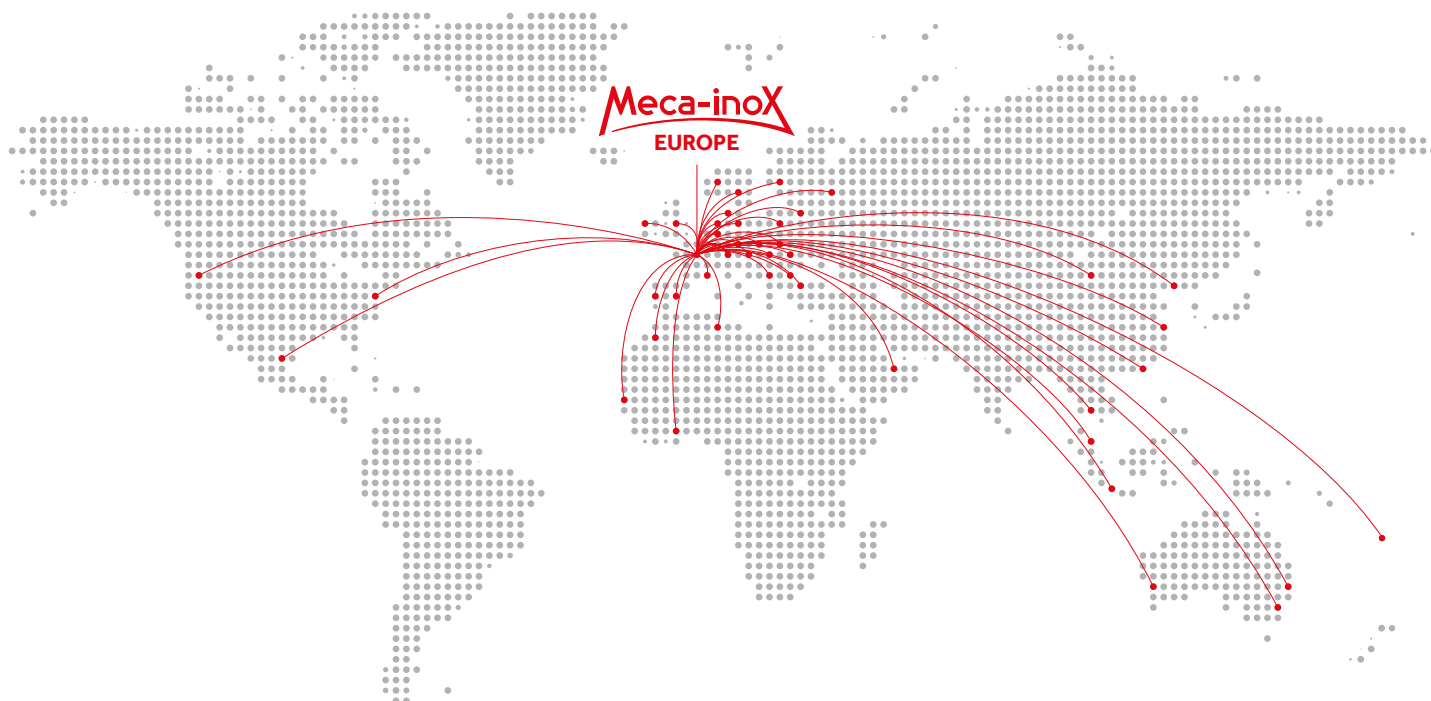


### Flush / Tank Bottom Designs

- Reduced retention zone
- For tank bottom installation and flushing lines (collection and injection)
- Any stainless steel end connection available (BW, orbital, clamp, ...)
- CE1935 spare parts



TÜVRheinland®  
**CERT**  
ISO 9001



## Your reference for large-scale international projects

As a leader in France and a key player in Europe in its markets, the company **operates in over 35 countries** through a network of around a hundred distributors.

Thanks to the capacity and flexibility of its industrial site in Gisors (Normandy), capable of producing up to 20,000 valves per month, Meca-Inox adapts to all its customers' demands: from a few valves for industrial equipment to over 10,000 valves for building a new mega-factory, as well as maintenance parts for installed valves.

**3 000 000** valves installed  
in 150 countries

**150 000** valves produced  
per year

**100** official stocking  
distributors

### MECA-INOX EUROPE

1, rue de la Croix des Maheux  
F-95031 CERGY-PONTOISE CEDEX  
T. + 33 (0)1 78 47 80 00  
[infos@meca-inox.com](mailto:infos@meca-inox.com)

[meca-inox.com](http://meca-inox.com)

### INDUSTRIAL PLANT

12, rue de la Haute Borne  
ZAC Le Mont de Magny  
27140 GISORS – France

BALL VALVES MADE IN FRANCE

WORLDWIDE AVAILABLE